

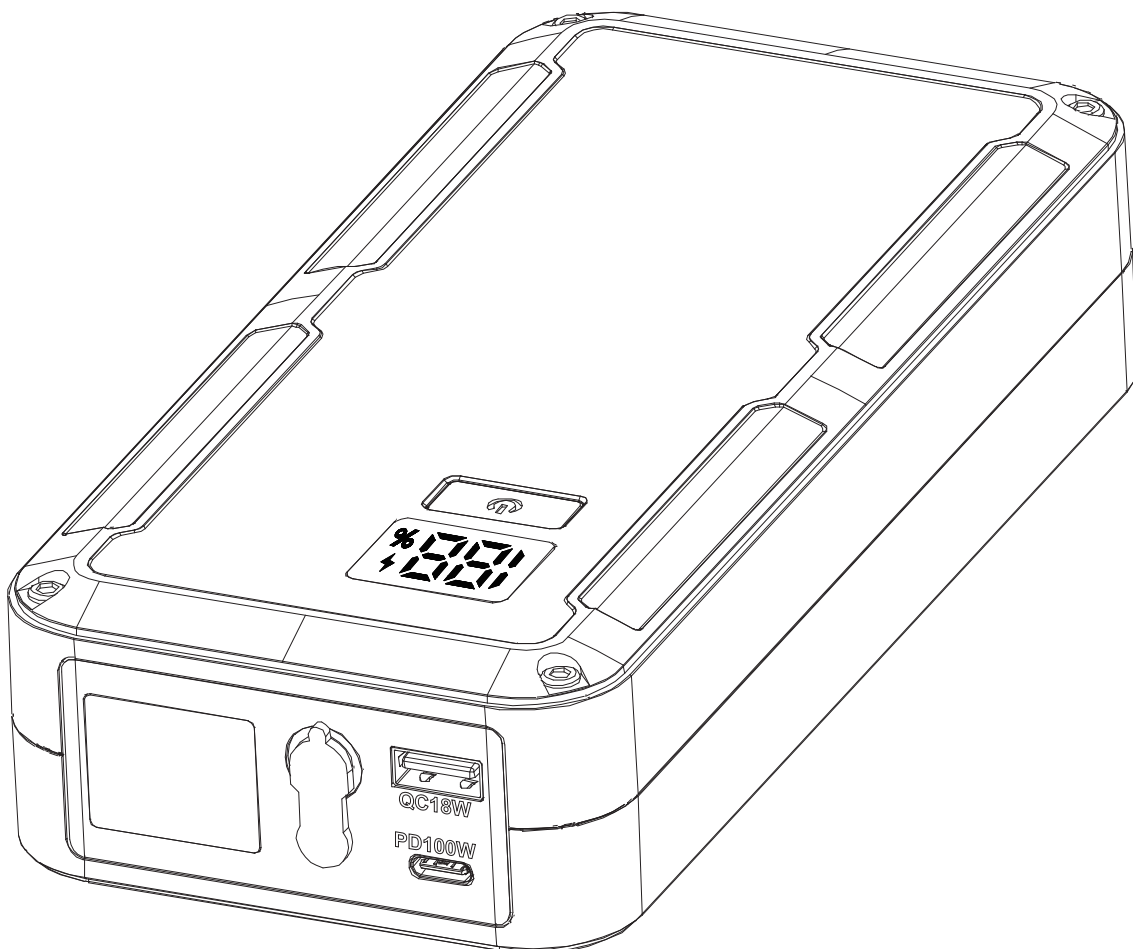
Brought to your by Marxgold

JUMP BOOSTER

BOOSTX32

32000 mAh Jump Starter

User Manual



Please read the manual carefully before operating and keep it!

ABOUT THE PRODUCT

Thank you very much for applying our multi-function portable jumpstarter. When you encounter an accident loss or damage of car battery, or cannot start the car due to temperature reasons, you can try to start your car with this product. This jumpstarter has been built in high quality lithium polymer battery, the peak starting current can be up to 3200A. Before using this product, please read the user manual carefully and properly keep for reference.

This manual is to help you use the product correctly, it does not represent any description on the hardware and software configuration of the product. About the product configuration, please refer to the contract related to this product (if there is), or consult to the seller that sells the product. Pictures in this manual is for reference only, if there are individual pictures do not match the actual, please prevail in actual products.

I. NOTICE BEFORE USING!

- 1. This product must cooperatively work with the equipped battery Clamps, it is forbidden to use a third party battery clip, otherwise it will cause dangers and may endanger the safety of users.**
2. Correctly connect the product to the positive and negative pole of the car battery that has suffered power loss or damage, this product will intelligently recognize the car battery voltage, users can instantly start the engine by switching the engine switch.
3. Vehicles that have on-board computerized systems which not designed to meet ISO 16750 standard may be damaged if vehicle battery is jump-started. Before jump-starting, read the vehicle's owner's manual to confirm that external-starting assistance is suitable.
 - ※ ISO 16750 is an ISO standard which provides guidance regarding environmental conditions commonly encountered by electrical and electronic systems installed in automobiles.
4. Jump-start procedures should only be performed in a safe, dry, well-ventilated area.
5. Always store battery clamps when not in use. Never touch battery clamps together. This can cause dangerous sparks, power arcing and/or explosion.
6. This unit is designed to be used only on vehicles with a 12 volt DC battery system. Do not connect to a 6 volt or 24 volt battery system.
7. This unit is not designed to be used as a replacement for a vehicular battery. Do not attempt to operate a vehicle that does not have a battery installed.
8. Excessive engine cranking can damage a vehicle's starter motor. If the engine fails to start after the recommended number of attempts (no more than 5 times of attempt to start the engine at a time) , discontinue jump-start procedures and look for other problems that may need to be corrected.

II. OTHER WARNINGS

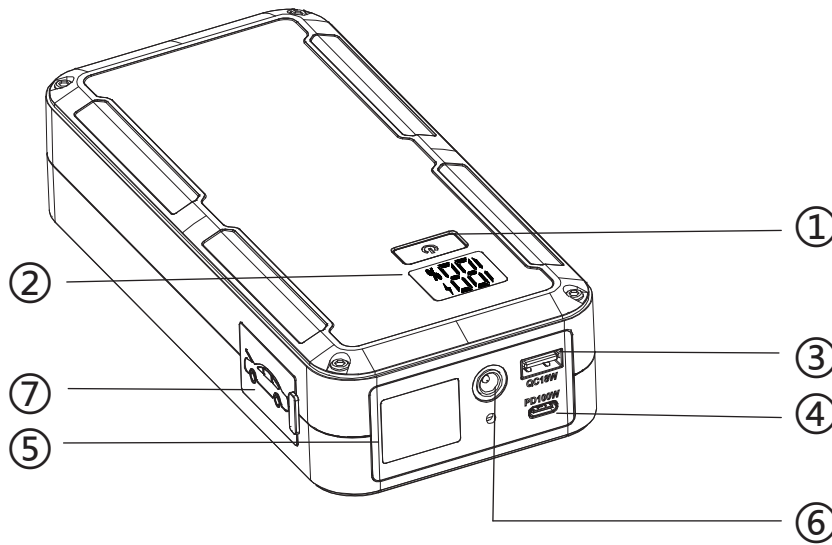
1. Do not short-circuit the unit. To avoid short-circuiting, keep the unit away from all metal objects (e.g. coins, hair-pins, keys, etc.);
2. Do not heat the unit, or dispose of it in fire, water or other liquids. Keep away from high temperatures. Do not expose the unit to direct sunlight.
3. Keep away from high humidity, dusty places.
4. Do not disassemble or reassemble this unit.
5. Do not drop, place heavy objects on, or allow strong impact to this unit.
6. This appliance is not intended for use by persons (including children) with reduced physical, sensory or mental capabilities, or lack of experience and knowledge, unless they have been given supervision or instruction concerning use of the appliance by a person responsible for their safety.
7. Children should be supervised to ensure that they do not play with the appliance.
8. Do not cover the device with towels, clothing and other item.
9. The unit may become hot when charging. This is normal. Use caution when handling.
10. Do not charge the unit over the required time.
11. Disconnect the unit when fully charged.
12. Use the unit properly to avoid electronic shock.

III. PRODUCT PARAMETERS

Capacity	32000mAh, 3.7V/118.4Wh
Dimensions(LWH)	225*90*45mm
Weight	980g
Built-in Battery	High Rate Discharge Lithium Polymer Batteries
Input Recharging	Type-C PD65W
Fully Charged Time	About 2.4 hours
EC5 Output	Support 12V Battery System Vehicle
Output	USB-A:QC18W; Type-C:PD100W; DC: 12-16V/15A(Max)
Bulb Type	Ultra bright LED light/SOS/Blink
Peak Current	3200A
Operation Temperature Range	-20℃ -60℃
Lifecycle	>1000 times
Safety Technology	MultiSafety Protection V2.0
Package include	1 x Jump starter 1 x Cigarette Lighter adapter 1 x Type-C cable 1 x Battery clamps 1 x User manual 1 x Type-C to USB=A cable

※ **There may be some differences on different spare parts. Please adhere to the actual product instead.**

IV. PRODUCT DESCRIPTION



▲ Figure1. Product interfaces

- | | |
|------------------------------------|--|
| ① ON/OFF BUTTON/FLASHLIGHT CONTROL | ⑤ FLASHLIGHT/SOS LIGHT/BLINK |
| ② BATTERY CAPACITY INDICATOR | ⑥ DC OUTPUT |
| ③ USB-A OUTPUT | ⑦ EC5 OUTPUT |
| ④ Type-C INPUT & OUTPUT | Connect the Clamps to this dock.
Support 12V Vehicle Battery System |

Keys Function Description

⏻ /MODE : Power ON/OFF/LED light Modes switch

Power ON: Press the ⏻ button on top of the unit to **switch on. The unit will automatically turn off when it's not used.**

LED light mode switch: Press the ⏻ button for 3 seconds to turn on the flashlight, then single press the button to switch mode, with 3 modes available: flashlight, SOS, Blink.

V. PRODUCT INSTRUCTION

1. How to start a car with this product

When the car can not start due to battery power loss or low temperature, this product can be used to start the car.



Warning!

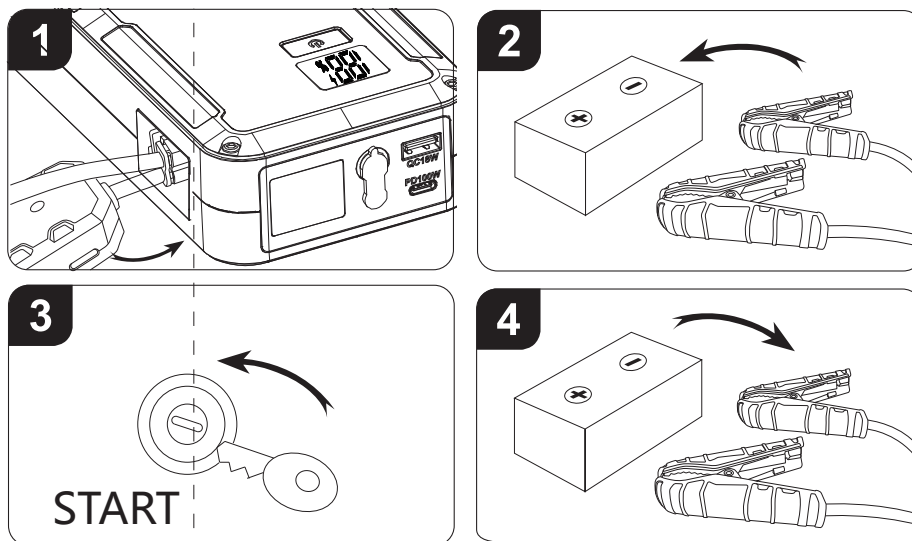
This product can only be used for the 12V car battery, cannot be used on a 6V or 24V car battery; before using this product, please ensure that your car battery voltage is 12V version

Excessive engine cranking can damage a vehicle's starter motor. If the engine fails to start after the recommended number of attempts (no more than 5 times of attempt to start the engine at a time), discontinue jump-start procedures and look for other problems.

2. How to jumpstart a Car with this product

- 1) Open the product dust cover, insert the Battery Clamps into the interface of EC5 Dock;
- 2) Clip the red clamp on the positive electrode of car battery, clip the black clamp on the negative electrode of car battery(the red clamp represents positive electrode, black represents negative electrode);
- 3) After correct connection, the battery clamps will activate automatically and green/red blinking indicator light on the Safety Box of the Battery Clamps will turn to solid green, please start the car in time; The battery clamps will turn deactivative if user doesn't start the car in 60 seconds. User needs to reconnect the clamps to the vehicle battery to re-activate the battery clamps.
- 4) After the car is successfully started, please remove the Battery Clamps from car battery carefully and unplug the Battery Clamps from the EC5 Dock timely.

Attention: When taking off the Battery Clamps from car battery timely, the Clamps are forbidden to connect with the positive/negative electrode, otherwise it may cause short circuit protection and electric spark. Please separate the clamps from the jump Starter in time. If there is a short circuit protection, the indicator light on the safety Box of the battery clamps will turn red, Disconnect the clamps from the product immediately to recover, please clear the wrong doing before using again.

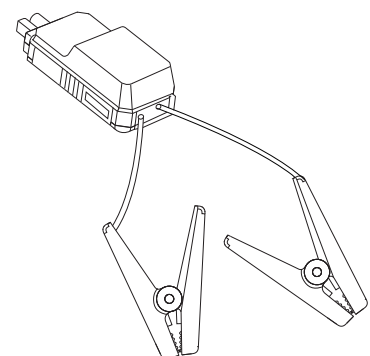


▲ Figure 2. Application method

Note: The product will enter into protection mode if wrongly operated.

BATTERY CLAMPS INDICATOR:

- ① **Green/Red Light Blinks:** Standby
- ② **Green Light On:** Ready to Jump Start
- ③ **Red Light On/Alarm:** Over Voltage/Low Voltage/Reverse Polarity/Reverse Charging/Short Circuit/Over Current/Over Temperature/Over Time Protection



Intelligent Jump Cable

3. Application of the product in low temperature condition

If the product is placed under extremely low temperature conditions (below zero degrees Celsius), the chemical activity of lithium battery will decrease due to the temperature affect, output power drops, the first emergency starting may fail due to the insufficient output power. Because the product temperature will naturally rise when using, the chemical activity of lithium battery will slowly recover, as well as the output power. You can try to start the car within a specified times(no more than 5 times)

- 1) After each use, please recharge the battery in time, so as to have a higher power output in case of low temperature;
- 2) In low temperature, the first starting may fail, please try to start the car in a specified time(5 attempts max);
- 3) If the power is not enough(less than 3 levels), in the low temperature mode, it may be unable to provide sufficient power to start the car, if you still cannot start the car within the specified time, please stop using this product, check for other problems,or contact a third emergency rescue instead.

4.How to provide power for digital appliances with this product?

USB Outputs: this product is with USB-A output and Type-C output to charge your different electronics, such as smartphones, tablets, laptops etc.

DC Outputs: this product is with DC5521 outputs to charge your DC devices, such as DC lights, DC air compressor etc.

5. How to charge the product?

- 1.Connect the jump starter and the power source via the Type-C cable.
- 2.Once it is fully charged, the capacity display will show 100%.
- 3.Unplug the cable when no charge is required.

Note:

- When using product for the first time, please make sure that the jump starter is fully charged.

VI. PRODUCT APPLICATION SKILLS

- a) Before using the product to jumpstart the car, please turn off the electronic equipment on the car firstly, such as air conditioning, lights, navigation, driving recorder, so as to achieve a better starting effect.
- b) This product is built in high quality original lithium battery, it has no memory effect but high-capacity, and it is durable. However, we still recommend you to apply in the range of 10 °C ~30 °C, so as to obtain the optimal charging capacity.
- c) If the device has not been used for a long time, please disconnect the cable and store.
- d) Some portable devices may need to be set in charge mode to charge, see the corresponding equipment use manual for more information.
- e) In order to extend the life of product (lithium battery), it is best to charge within 3 months, and charge at least once within 6 months.
- f) After starting, if there is no any output, the product will automatically shut down within 20seconds, so as to achieve better energy-saving effect.

Recycle

Always return your used electronic products, batteries, and packaging materials to dedicated collection points. This way you help prevent uncontrolled waste disposal and promote the recycling of materials.

Battery information

Your device has and internal, non-removable, rechargeable battery. Do not attempt to remove the battery, as you may damage the device.

The battery can be charged and discharged over 1000 times, but it will eventually wear out.

Statement

All rights reserved. Reproduction in whole or in part without written permission is prohibited. All other trademarks are trademarks of their respective owners. Features and specifications are subject to change without notice.



MADE IN CHINA

WARRANTY

Jumpbooster.com.au warrants the product for manufacture faults of parts failure during normal use

Jumpbooster will access the faulty product and deem if the product is covered by warranty.

Our warranty period is for 12 months where a faulty product will be either repaired or replaced at no cost to you.

We offer an extra 2 years of Pro-Rata warranty as per our website terms and conditions

Between 1 and 2 years repair or replace
50/50 shared cost of repair and shipping

Between 2 and 3 years repair or replace
75/25 shared cost with the consumer covering 75% of the repair/replacement and shipping cost

Contact Information

email	sales@jumpbooster.com.au
Web	www.jumpbooster.com.au
Phone	0428 198 423